



WRAPPED DOLL

Instructions

©2010 Barb Kobe



1. Collect a variety of sticks all about the same length.

Make sure they are strong and sturdy....and dry.

Clip off any little branch stubs with garden clipper.



2. Position 2 sticks together. Have one stick longer than the other so the top of the long stick will be the neck.

Duct tape the neck and ankles

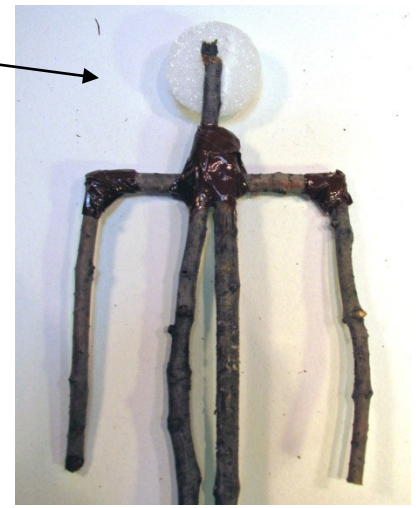
Try to have a slight opening between the two sticks. You can put prayers and affirmations into the opening if you like.



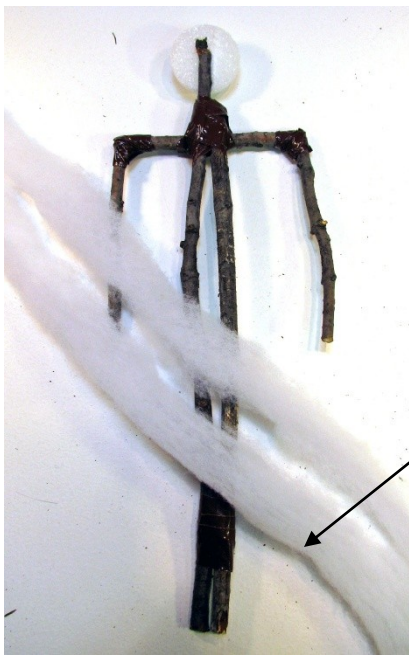
3. Clip a small piece of branch for the shoulders and duct tape onto the body right under the neck.



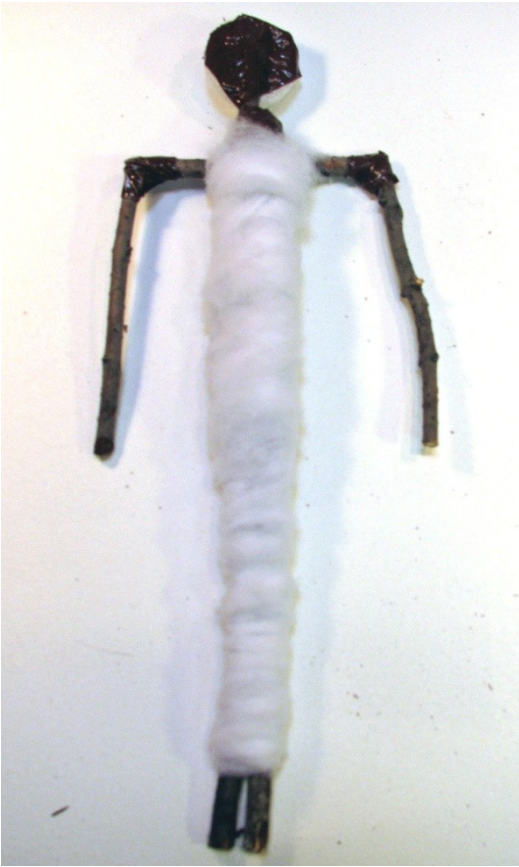
4. Clip two pieces of branch for the arms and duct tape those onto the shoulders.



5. Cut a small Styrofoam ball in half and push into the neck (this is the back of the head).



6. Cut quilt batting into 1 " strips.

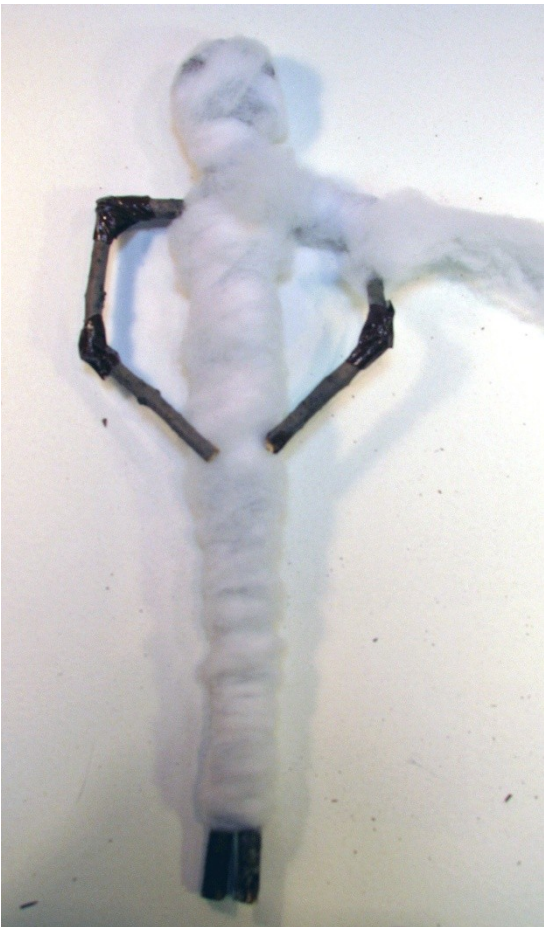


7. Put a piece of duct tape over the neck and Styrofoam ball to hold in place

8. Start wrapping the sticks. Be sure to wrap sticks really snug. You can put as many layers of batting on that you like in order to build up the body.

9. Wrap the head with a tight, light layer of batting

10. Keep wrapping the shoulders and arms. Leave some of the stick showing for feet and arms.



You can wrap prayers and affirmations into the batting.

I suggest cutting strips of muslin and writing on them with Sharpie markers.





11. Once the doll is wrapped with Batting, cut or tear strips of your fabric and start wrapping the doll with the strips of fabric, again, make sure you wrap nice and snug.

As you are wrapping the doll with fabric twist the fabric one twist to go around curves. This helps the fabric stay snug to the doll and makes for a more interesting textural look and feel.

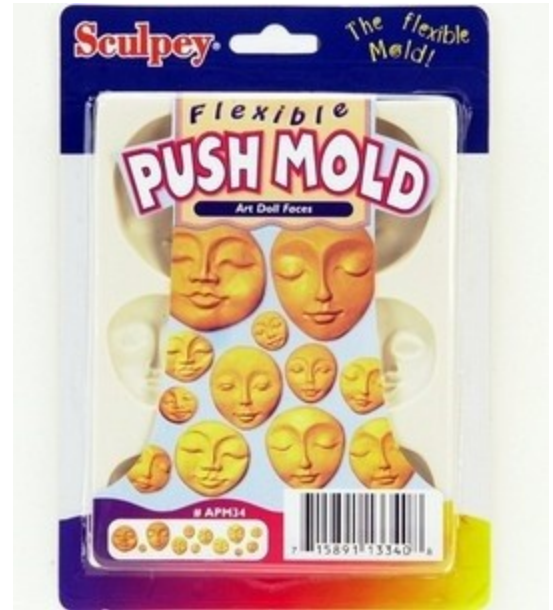
Be sure to put one layer of fabric on the head. You can use glue to make it stick.



This is the face mold I used for this doll.

I used Fimo (polymer clay) for this face. Before baking I brushed on different colors of Pearl Ex Powders.

Once baked and cool I add eyeliner, eye brows and lipstick using acrylic paint.





12. Glue the face onto the doll using a strong, quick setting glue like E6000 or



13. Hank of Hair
Cut 6-8 lengths of yarn.
Fold in half and use another piece of yard to tie together in middle.
Make 6-8 hanks.

Use Beacon's 3-in-1

Advanced Craft Glue to glue hair to head....one hank of hair at a time. Start at top of head gluing each hank next to the last with tied middle placed on center of head. You can glue hanks on top of hanks for fuller hair.





14. Once doll is put together paint the sticks that show with acrylic paint in a color that works with the fabric body.

15. Ways to finish doll:

- Put beads in areas that you want to focus healing energy.
- Using embroidery floss stitch down areas on the doll body; adds more interest to let the colors of floss show.
- Bead and embellish all over the doll.

